

Vertex Dental

Premium Denture Solutions



Catalogue product range

Welcome

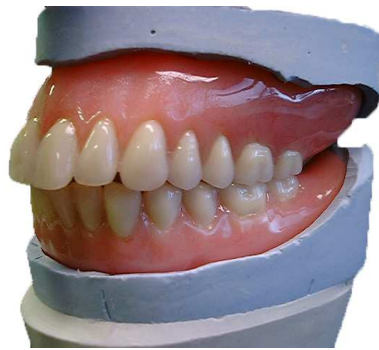
Vertex-Dental's vision is to be a world-wide leading manufacturer of innovative custom made denture products and to be recognized by dental professionals as a benchmark for premium denture solutions with reliable performance.

One of our strategies is to offer a complete product range specially developed for the denture department of the laboratory, for the denturist and orthodontic technicians. Making a denture is a complex process of particular steps. Those steps must be tuned to each other very precisely. Each product is adjusted in accordance with the expectations of denture technicians. Vertex™ Dental will constantly support you to improve the technical standards of making dentures. The goal is to save time and to improve the quality of your daily work.

In this brochure you will find our complete product range, including our latest innovations like the Gelmelt machines, Teeth Coloured Acrylic, Rebase claps and LC Eco box. Every innovation is focussed on the daily practice. Due to the implementation of the Vertex Dental Academy, every innovation has been a result of a combination between market research and practical experiences.

Looking forward to have a fruitful co-operation together!

Rik Jacobs
Director Marketing and Sales



Contents

Freedom of choice	3
New introduction	4
Acrylic teeth	5
Heat-curing denture base acrylics & PE-sheets	6
High Impact acrylics & Flasks	7
Cold-curing repair acrylics	8
Cold-curing denture base acrylics	9
Casting System	10
Tray-, Orthodontic acrylics & Separation fluid	11
Soft acrylic, Staining & Putty 1:1	12
Shade guides	14
Polymerisation machineries	15
Duplication machineries	16
Tray- / Baseplates & waxes	17
Rotary Instruments	18
Grinding Assortment	19
Polishing & Gloss Assortment	20
Hygienic assortment, Distribution accessories & Bonding fluid	21
Precision Instruments	22
Vertex Dental Academy	24

Vertex™, a freedom of choice

Vertex-Dental is offering a wide range of specific colours for the various population groups (from Asian to Southern European and from North American to South African).



In combination with the various packaging size, Vertex-Dental makes it possible for any laboratory to offer a cost-effective solution for every case.





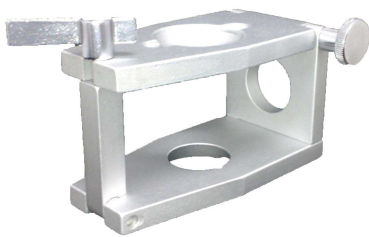
FVMAC0005

Vertex™ Eco Light Box

The Vertex Eco LightBox has a detachable tray with a black out front. A simple switch can be set at 5 or 10 minutes curing time.

The high intensity and short polymerisation time, makes the machine suitable for polymerisation of individual light curing trays like the Vertex L.C. Trayplates.

Size (HxBxL):	111 x 119 x 310 mm
Nanometre reach:	350 – 500 nm
Weight:	3,45 kg
Lights:	4 pieces



FVACC0038

Vertex™ Rebase Clasp

The Vertex Rebase Clasp has been made of aluminium which makes this clasp light and durable. Besides, the clasp is very user-friendly. During the new course repair and rebasing & repairing the clasp is used.



Powder article series AVTCAP: 40g
Liquid article series AVTCAV: 60ml

Vertex™ Teeth Coloured Acrylic

Vertex TCA is a teeth coloured acrylic, which you can use for restorations to dentures and frames where an element must be renewed, repaired or are permanently fixed. For example: for implantology cases making temporary crowns or bridges of this material is a solution.

Advantages of this material are: · no shrinkage · no discoloration · easy to model · polymerisation of 55 degrees · different colours.

Vertex™ Quint Teeth

The innovative 5 layer aesthetic and durable teeth: Quint!

Advantages of the new Vertex™ Quint:

- Excellent bonding characteristics with Vertex denture base acrylics.
- Wide range of models.
- Available in 16 colours A1 / D4.
- Innovative 5 layer concept.
- Easy to grind and colour stable after grinding.
- Double cross linked and a high molecular weight.

Set-up course by using Vertex™ Quint teeth is educated at the Vertex Dental Academy.

Special mould cart is available upon request.





Vertex™ Rapid Simplified

Vertex™ Rapid Simplified is a heat-curing denture base material and forms a solid base for full and partial dentures. The pressing technique is the processing method for Vertex™ Rapid Simplified. This cadmium free acrylic has a rapid 20 minutes polymerisation cycle (also "overnight" polymerisation is possible), the flask to be put in boiling water. Authentic pressing technique course is educated at the Vertex Dental Academy by using Vertex™ Rapid Simplified.

Powder, article series AVRSP: 150, 500, 1000, 2000, 4000, 10000 and 25000g.
Liquid, article series AVRSV: 75, 250, 500, 1000, 2000, 5000 and 12500ml.



Vertex™ Regular & Regular Crystal Clear

Vertex™ Regular is a conventional heat-curing denture base material and forms a solid base of full and partial dentures. The pressing technique is the processing method for Vertex™ Regular. This cadmium-free acrylic has a conventional long polymerisation cycle, the flask to be put in cold water. Vertex™ Regular is the ideal hot-curing acrylic in tropical climates. Also available in Crystal Clear.

Powder, article series AVRGP: 150, 500, 1000 and 4000g.
Liquid, article series AVRGV: 75, 250, 500 and 2000ml.
Regular Crystal Clear, article number AVRGCC01000: 1000ml.



Vertex™ Divosheet

Vertex™ Divosheet is a highly flexible polyethylene sheet to be used in the trial pressing method in order to avoid a bite raise. Per box 1000 sheets.

Article number FVACC0019: 10 x 1 box.





Powder, article series AVIMP:
150, 500 and 1000g.
Liquid, article series AVIMV:
75, 250 and 500ml.

Vertex™ Implacryl

Vertex™ Implacryl is a heat-curing extra strong denture base material developed for the production of complete and partial dentures and in particular for over-dentures on implants. The pressing technique is the processing method for Vertex™ Implacryl. Using high impact acrylic in implant work is educated at the Vertex Dental Academy to prevent breaking of dentures due to the lack of space.



Powder, article series AVICP:
150 and 1000g.
Liquid, article series AVICV: 75 and 500ml.

Vertex™ Implacryl Cold

Vertex™ Implacryl Cold is a cold-curing extra strong denture base material developed for relining and extensions of dentures. This acrylic must be polymerized in a pressure vessel like the Vertex™ PolyCure 25 or MultiCure.



Article service FVACC0035 (upper),
FVACC0036 (lower) and FVACC0037
(clasp).

Vertex™ Metal upper and lower flasks with clasp

The Vertex™ metal upper and lower flasks are special designed together with the Vertex MultiCure™ machine. So it is possible to polymerize 4 flasks in one time in the Vertex™ MultiCure machine.



Vertex™ Self-Curing

Vertex™ Self-Curing is self polymerizing and is suitable both for repair and relining of full and partial dentures, made by heat-curing acrylics like Rapid Simplified and Regular. Also suitable for extensions to dentures. This acrylic can be polymerized in 10 minutes using the Vertex MultiCure. Repair & rebase course is educated at the Vertex Dental Academy by using Vertex™ Self-Curing.

*Powder, article series AVSCP: 150, 500, 1000, 2000, 4000, 10000 and 25000g.
Liquid, article series AVSCP: 75, 250, 500, 1000, 2000, 5000 and 12500ml.*



Vertex™ Self-Curing Quick Set

Vertex™ Self-Curing Quick Set provides more rapid settings, forms dough more quickly and is very suitable for adding artificial elements. Quick Set is only powder which must be used with the Self-Curing liquid. Repair & rebase course is educated at the Vertex Dental Academy by using Vertex™ Self-Curing Quick Set.

Article series AVSQP: 150, 500, 1000, 2000, 4000, 10000 and 25000g.



Vertex™ Castaquick

Vertex™ Castaquick provides more rapid settings, forms dough more quickly and is very suitable for adding artificial elements. Castaquick is only powder which must be used with the Castavaria or liquid. For rebasing / re-lining dentures which are made by Castavaria and Castapress, Castaquick must be used. Repair & rebase course is educated at the Vertex Dental Academy by using Vertex™ Castaquick.

Powder, article series AVCQP: 150, 1000, 4000 and 25000g.





Vertex™ Castavaria

Vertex™ Castavaria is a multifunctional self polymerizing acrylic which is perfectly useable as a pouring- and as a repair acrylic. The advantages of this acrylic are: minimized shrinkage, colour stable in the long run, stable polymerisation cycle with a perfect end result and the acrylic is long pourable. To transfer a wax set-up by using a pouring type of acrylic is educated at the Vertex Dental Academy by using Vertex™ Castavaria.

Powder, article series AVCVP: 150, 1000, 4000 and 25000g.
Liquid, article series AVCVV: 75, 500, 2000 and 12500ml.



Vertex™ Castapress & Castapress Crystal Clear

Vertex™ Castapress is a self polymerizing pouring/ casting type denture base material also suitable for repair, relining, rebasing and extensions of partial dentures. The colour stability of the material is excellent because of the use of a unique accelerator system. Using Acrylic on frames is educated at the Vertex Dental Academy by using Vertex™ Castapress. Also available in Crystal Clear (liquid only).

Powder, article series AVCPP: 150, 500, 1000, 2000, 4000, 10000 and 25000g.
Liquid, article series AVCPV: 75, 250, 500, 1000, 2000, 5000 and 12500ml.
Castapress Crystal Clear, article number AVCPVCC01000: 1000ml.



Vertex™ Casting System

Vertex™ Casting System can be used in combination with Vertex™ Castapress or Castavaria to produce effective a full or partial a denture. With this system you use gel or a pour type silicone instead of plaster. Shrinkage will be prevented and time will be saved while transferring a wax set-up by using a pouring type of acrylic.



- Teethholder
- Canalcutters
- Castaflask blue
- Castaflask transparent
- Silicone stop
- Flask clamp

Article number

FVPOU0001
FVPOU0002
FVPOU0003
FVPOU0010
FVPOU0007
FVPOU0008



- Castagel blue 6000g
- Castagel blue 2000g
- Castagel clear 6000g
- Castagel clear 2000g

FVPOU0004
FVPOU0012
FVPOU0009
FVPOU0013



- Castasil 21 (pour type silicone)

FVSL0019

Article serie FVPOU: several quantities.



Vertex™ Trayplast

Vertex™ Trayplast is a self polymerizing acrylic for individual impression trays. This acrylic can be polymerized in 10 minutes using the MultiCure.

*Powder, article series AVTNP: 500, 1000 and 2000g in several colours.
Liquid, article series AVTNV: 250, 500 and 1000ml.*



Vertex™ Orthoplast

Vertex™ Orthoplast is a self polymerizing acrylic for orthodontic appliances. Its unique grain structure makes this acrylic suitable for the spray-on technique. Vertex™ Orthoplast powder is available in clear. In addition, an extensive range of colours (18) incorporated in the liquid is available.

*Powder, article series AVOPP: 200, 500, 1000, 2000, 4000, 10000 and 25000g.
Liquid, article series AVOPV: 100, 250, 500, 1000, 2000, 5000 and 12500ml.*



Vertex™ Divosep

Vertex™ Divosep is used for the separation of acrylics to plaster and plaster to plaster. Divosep is available in the following types/colours: orange - pressing technique / red - pouring technique / blue - universal use.

Article series blue AVDSBL, article series red AVDSRO, article series orange AVDSOR: 1000 and 5000ml.





Vertex™ Soft

Vertex™ Soft is a flexible denture soft lining acrylic (heat-curing). Vertex™ Soft has an excellent adhesion to both new and existing dentures. The outstanding surface density makes the material simple to finish and polish with the special Vertex™ polishing instruments. Vertex™ Soft is for temporary use. Soft base is educated at the Vertex Dental Academy. Patients with continuous pain problems because they are wearing a denture are in most cases helped with a Vertex™ Soft liner.

*Powder, article series AVSNP:
150, 500 and 1.000g.
Liquid, article series AVSNV:
75, 250 and 500ml.*



Vertex™ Acrylic Stain

Vertex™ Acrylic Stain is used to give an individual colour characterisation to full and partial dentures. This acrylic is suitable for use in combination with most denture base materials for the pressing technique and the pouring technique. The use of Acrylic Stain is educated during the following courses; transferring a wax set-up by using a pouring type of acrylic, high impact acrylic in implant work and the authentic pressing technique at the Vertex Dental Academy.

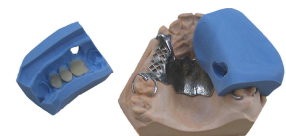
*Per colour, article series AVASP: 100g in
colour 210, 220, 230, 240 and 250.
Complete package, article number
AVASCOMPLEET: set 5 x 100g
(including needles, plugs and PE bottle).*



Vertex™ Silicone Putty's

Vertex™ Putty 1:1 is a hard silicone for manual appliances. The Shore A value is 85 after setting. Putty 1:1 is suitable for moulds, fixing keys, provisional models etc. Putty 1:1 is form stable, heat resistant till 300 degrees Celsius and gives an excellent reproduction of details. Besides it contains user-friendly materials.

*Article series FVSIL: in 1000g, 5000g
25000g.*



Shade guide for hot & cold polymerising acrylics

Vertex™ acrylics are matched to the individual colour identity of each patient. Standard available in the following colours:



- 1 Light pink
- 2 Pink opaque
- 3 Translucent pink
- 4 Clear
- 5 Pink veined
- 6 Dark pink veined
- 7 Blue pink veined

- 8 Blue pink
- 10 Translucent pink veined
- 14 Brown pink veined

Other colours upon request, minimum quantity 150kg

Article number FVACC0011: piece.

Shade guide for Orthoplast

Available in the following colours:



- 901 Red
- 902 Yellow
- 903 Blue
- 904 Green
- 907 Purple
- 908 Turquoise
- 909 White
- 910 Violet
- 912 Black
- 913 Magenta
- 914 Neon yellow
- 915 Neon green
- 916 Neon Orange
- 917 Neon pink
- 921 Pink opaque
- 922 Clear
- 923 Pinktone
- 924 Crystal clear

Article number FVACC0012: piece.



Vertex™ PolyCure 25

With the Vertex™ PolyCure 25 pressure vessel you can control your polymerization process perfectly with all cold-curing acrylics like:

- Vertex™ Castavaria
- Vertex™ Castapress
- Vertex™ Castaquick
- Vertex™ Castavite
- Vertex™ Self-Curing
- Vertex™ Implacryl Cold
- Vertex™ Trayplast
- Vertex™ Orthoplast.

The Vertex™ PolyCure 25 has an adjustable water level, fixed pressure of 2.5 Bar and a constant water temperature of 55 degrees Celsius. With this pressure vessel you are able to polymerize up to 9 Vertex™ Castaflasks in one run!

The machine has three fixed programs: 10 minutes, 20 minutes and 30 minutes. Besides, a countdown timer and an acoustical alarm function together with automatic pressure release.

Water release valve on the right-side of the machine.

Article number FVMAC0001: piece.



Vertex™ MultiCure

Hot-curing acrylics, 4 flasks, 100°C:
Rapid Simplified, Regular, Implacryl & Soft

Cold-curing acrylics, 3 flasks, 55°C, 2.5 Bar:
Castapress, Castavaria, Implacryl Cold, Castaquick, Self-Curing & Trayplast

Orthodontic acrylics, 9 models, 55°C, 2.5 Bar:
Orthoplast

Crown & Bridge acrylics, (minimum) 93°C, 6.0 Bar

- Adjustable time programs (including time interfaces)
- Adjustable temperatures
- Adjustable pressure (air regulator is an option)
- Maximum temperature: 100 degrees Celsius
- Maximum working pressure: 6 Bar
- Water release valve on the right-side
- Inside chamber dimension: 220mm(W) x 200mm(H)
- Programmable for 2 steps (2 holding steps with 2 different temperatures and times)

Article number FVMAC0002: piece.



Vertex™ Gelmelt 8

This full-automatic gel melting machine has an 8 litre tank. By making use of microprocessor technology, very precise values can be realised.

The melting and processing temperatures are programmed with push-buttons and potentiometers, and shown in the display.

Article number Gelmelt 8: FVMAC0003: piece



Vertex™ Gelmelt Premium

This high-performance, low-noise instrument with its perfect electronic control meets the highest requirements in doubling technology.

The melting of max. 6lt and processing temperatures are programmed with push-buttons and potentiometers, and shown in the display.

The 850 watt heater has 4 heating circuits. Three heating circuits are electronically controlled so precisely, that the preset temperatures are maintained exactly at any position of the container.

Stirring, melting, cooling and maintaining processing temperature are carried out automatically. The doubling mass is filled with the hand valve, which is designed for exact dosing.

Article number Gelmelt Premium: FVMAC0005: piece



Vertex™ Light Curing Trayplates

Vertex™ Light Curing Trayplates with minimal residual layer after polymerisation makes processing easy. Each box contains 50 trays. Available colours are blue, pink and clear.

Article series FVACC: 12 x 1 box.



Vertex™ Baseplates

Vertex™ Baseplates, upper and lower are used to form a solid base for bite registration and wax set-up. Thickness 1.3mm, 100 plates per box.

Article series FVMOD: 10 x 1 box.



Vertex™ Wax Assortment

- 1000g Modelling wax regular
- 1000g Modelling wax hard
- Wax knife
- 100 Preformed wax rim red hard
- 100 Preformed wax rim pink medium

Article number

FVMOD0003

FVMOD0004

FVMOD0001

FVMOD0007

FVMOD0009

Article series FVMOD: several quantities.

Vertex™ Rotary Instruments

- Silicone polishers fine grit



FVROT0020



FVROT0021



FVROT0023



FVROT0024



FVROT0025



FVROT0026

- Silicone polishers coarse grit

- Hard metal cutters



FVROT0039



FVROT0040



FVROT0041



FVROT0042



FVROT0043



FVROT0044



FVROT0045



FVROT0046



FVROT0047



FVROT0048



FVROT0049



FVROT0050



FVROT0051



FVROT0052



FVROT0053



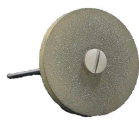
FVROT0008

Vertex™ Rotary Instruments

- Teeth grinders / polishers



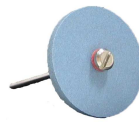
FVROT0010



FVROT0011



FVROT0030



FVROT0031



FVROT0032

- Thermoplast polisher



FVROT0054

Vertex™ Grinding Assortment

- Grinding cap & brushes (Scotch Brite®)



FVSIL0004



FVSIL0005
(extra rough)



FVPOL0015
(rough)



FVPOL0016
(medium)



FVPOL0017
(fine)

Vertex™ Polishing Assortment

- Polishing brushes



FVPOL0001



FVPOL0020



FVPOL0002



FVPOL0003



FVPOL0021



FVPOL0022



FVPOL0004



FVPOL0019



FVPOL0005



FVPOL0006



FVPOL0014



FVPOL0018



FVPOL0010

Vertex™ Gloss Assortment

- High Gloss Polishing brushes, high polishing paste and gloss varnish



FVPOL0011



FVPOL0013



FVPOL0009



FVACC0023



Vertex™ Hygienic / Packing Accessories

Before returning the denture back to the dentist / patient, spray-on Vertex™ ProClean, put the denture in a denture bag and then send the denture away in the dental carrier.

- ProClean (preventing bacteria growth)
- Denture bags

Article series FVHYG: several quantities.



Vertex™ Spray-on Bottles

- Aluminium powder distribution plug
- Orthoplast liquid needle 0.7 x 25mm
- Powder needle 0.9 x 25mm
- Acrylic Stain liquid needle 0.4 x 25mm
- PE-plug for PE-bottle
- PE-bottle

Article number

FVACC0013
FVACC0014
FVACC0015
FVACC0016
FVACC0017
FVACC0018

Article series FVACC: several quantities.



Vertex™ Acrybond

Acrybond creates a chemical bonding between denture base acrylics and acrylic teeth.



Article number Acrybond: AVABV00100.



Vertex™ Precision Instruments

- Mixing and pouring cup 100ml
- Mixing and pouring cup 250ml
- Mixing and pouring cup 500ml

Article number

FVACC0029

FVACC0030

FVACC0031



- Liquid cylinder 50ml
- Liquid cylinder 100ml
- Pipette 3ml (25pcs)

FVACC0032

FVACC0033

FVACC0034



- Silicone cup 75ml
- Spatula

FVACC0038

FVACC0039



Vertex™ Precision Instruments

- Drainage pump for 5 & 12,5lt cans

Article number
FVACC0002



- Mixing cup liquid
- Mixing cup powder
- Powder spoon
- Powder spout

FVACC0005
FVACC0006
FVACC0007
FVACC0008



- Alma gauge set
- Alma gauge transfer sleeve set (50pcs)

FVACC0009
FVACC0010



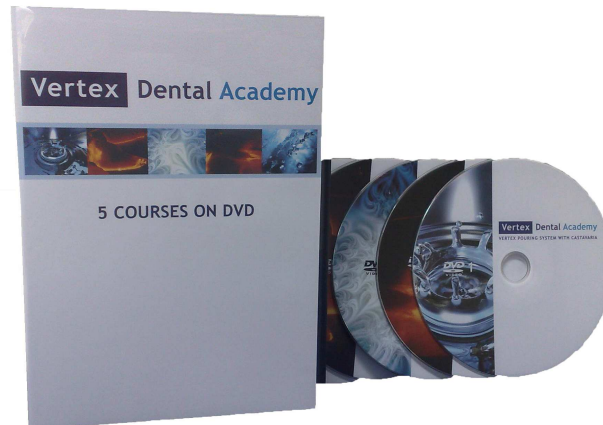
- Thermometer with protective cover

FVACC0028

Vertex Dental Academy

Six practical courses:

- To transfer a wax set-up by using a pouring type of acrylic
- Soft base
- High Impact acrylic in implant work
- Using acrylic on frames
- Authentic pressing technique
- Repair & rebase
- Set-up Complete



Article number: HVAC0007.

Academy brochure upon request at
Vertex-Dental, telephone +31 30 697 67 49 or
www.vertex-dental.com/academy

Vertex-Dental B.V. Headquarters

Postal address:

P.O. Box 10, 3700 AA ZEIST

Visiting address:

Johan van Oldenbarneveltlaan 62
3705 HJ ZEIST
The Netherlands

T: +31 30 697 6749

F: +31 30 695 5188

E: info@vertex-dental.com

www.vertex-dental.com

Vertex-Dental Asia Pte. Ltd.

The Alpha #04-16
Singapore Science Park II
10 Science Park Road
Singapore 117684

T: +65 68729315

F: +65 67757963

E: info.sg@vertex-dental.com

www.vertex-dental.com

